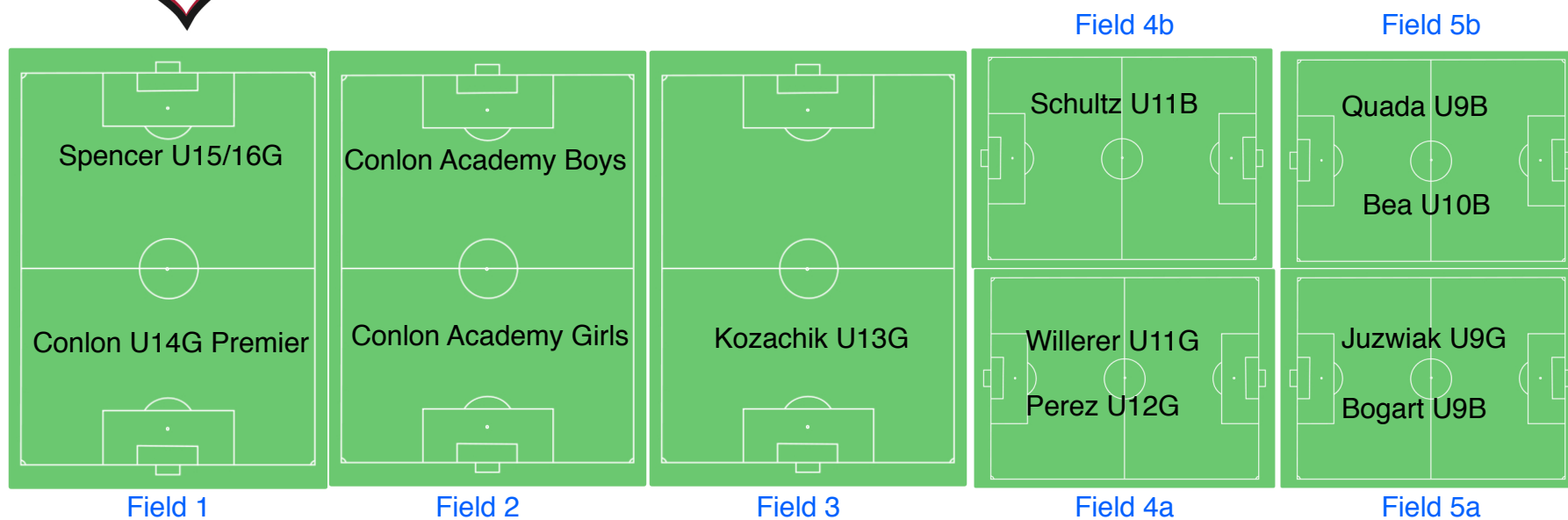


Brewer Park 2010 Fall Practice Schedule

- No dogs** allowed on or around Brewer Park Soccer Fields. No exceptions!!!!
- Be sure to clean up after every practice and every game. Teams are subject to \$25 fine
- Drive slow and watch for kids crossing the parking lot
- Be respectful to Kent County and Brewer Park Staff
- Be prepared to shift your practice to an alternate field for other teams games or scrimmages
- Report any damaged fields or equipment to Shannon Culver (304-7671) or Brewer Park Staff
- Be respectful to ALL Referees. As a spectator, you are representing Kentwood Soccer Club
- Keep your comments to the players positive and encouraging
- Visit <http://www.eteamz.com/BrewerPark/> for possible weekday games
- Visit <http://kentwoodsoccer.com/> for latest information on field conditions and bulletins
- Have a GREAT season and most of all, have FUN



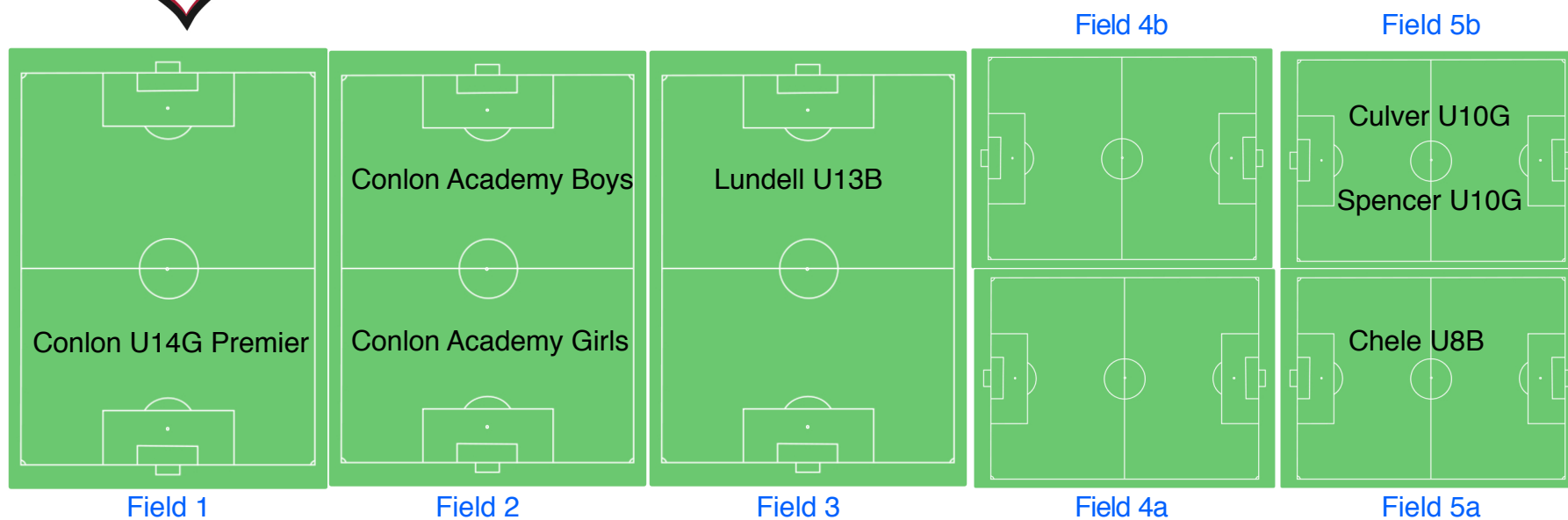
Monday



****All games take precedent over practice, be sure to frequently check <http://www.eteamz.com/BrewerPark/> for updates.**



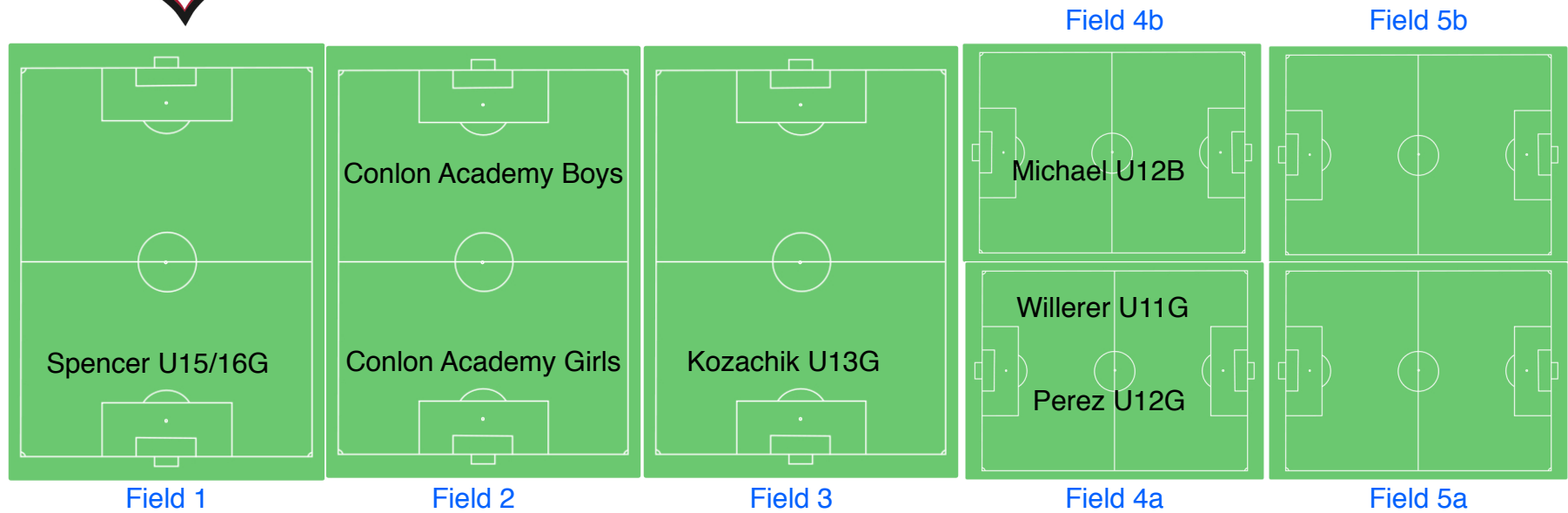
Tuesday



****All games take precedent over practice, be sure to frequently check <http://www.eteamz.com/BrewerPark/> for updates.**



Wednesday



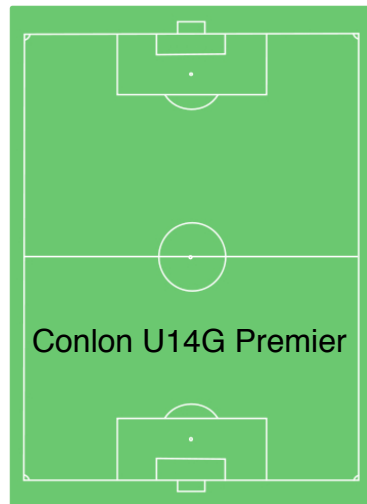
****All games take precedent over practice, be sure to frequently check <http://www.eteamz.com/BrewerPark/> for updates.**



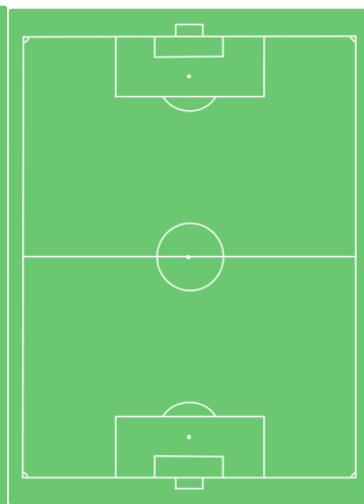
Thursday

Field 4b

Field 5b



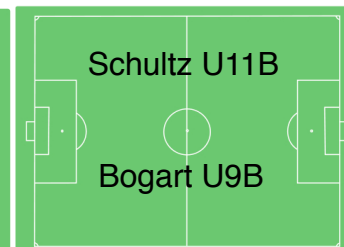
Field 1



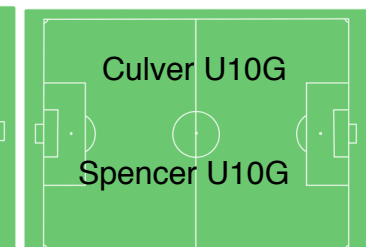
Field 2



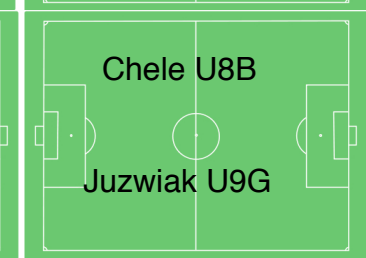
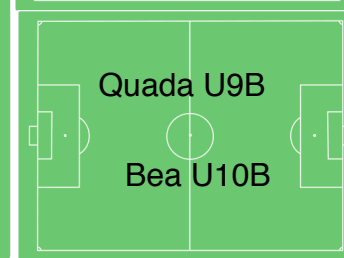
Field 3



Field 4a



Field 5a



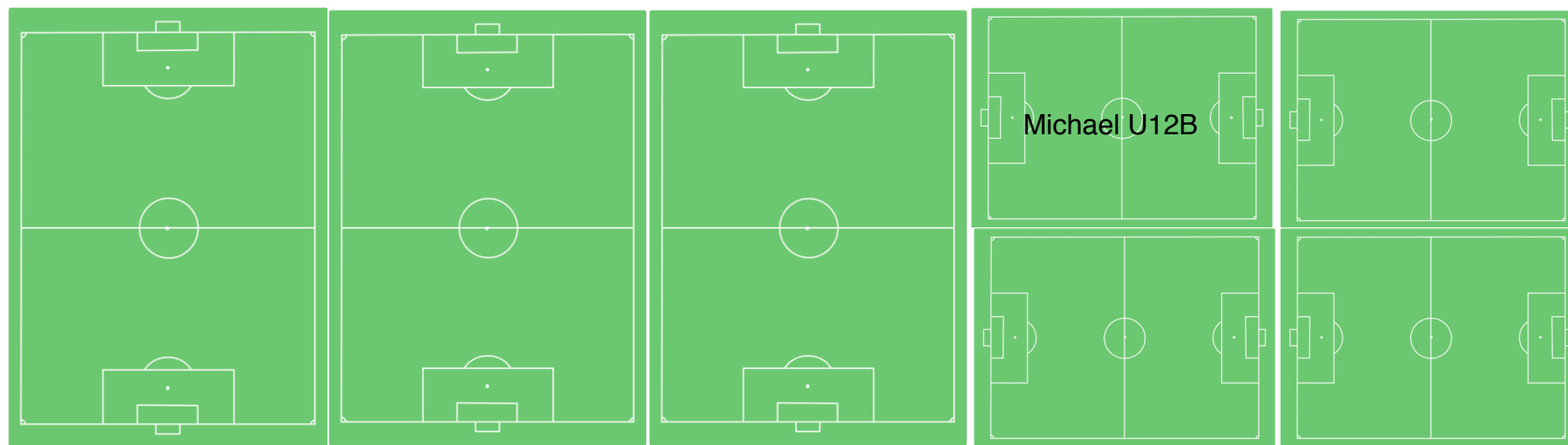
****All games take precedent over practice, be sure to frequently check <http://www.eteamz.com/BrewerPark/> for updates.**



Friday

Field 4b

Field 5b



Field 1

Field 2

Field 3

Field 4a

Field 5a

****All games take precedent over practice, be sure to frequently check <http://www.eteamz.com/BrewerPark/> for updates.**